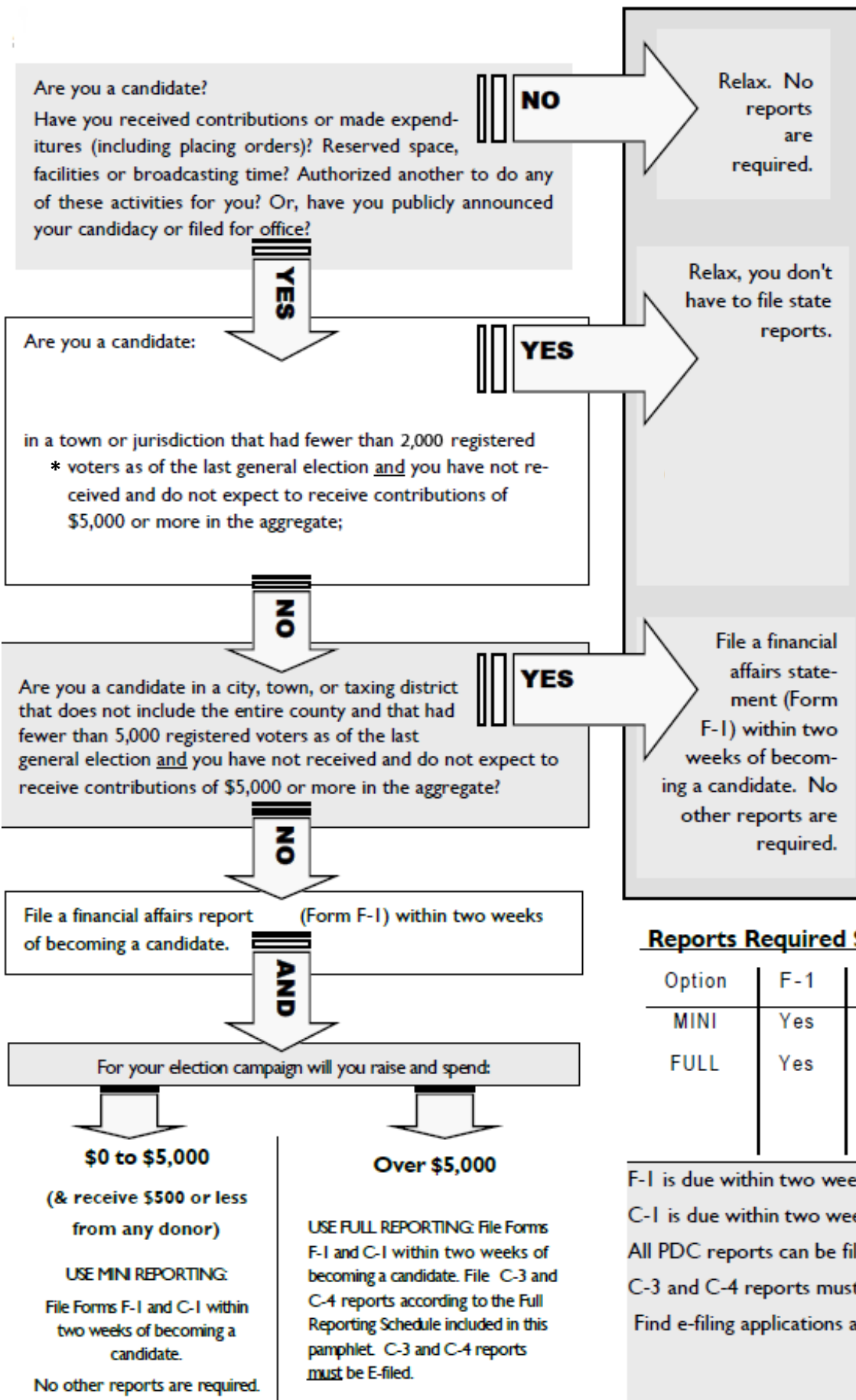


Public Disclosure Commission – What are my Reporting Requirements?



*See chart on back for the number of 'registered voters as of the last general election' in the jurisdiction or taxing district you are filing for.

Reports Required Summary

Option	F-1	C-1	C-3	C-4
MINI	Yes	Yes	No	No
FULL	Yes	Yes	Yes	Yes

See Full Reporting Schedule

F-1 is due within two weeks of becoming a candidate.
C-1 is due within two weeks of becoming a candidate.
All PDC reports can be filed electronically.
C-3 and C-4 reports must be filed electronically.
Find e-filing applications and software at www.pdc.wa.gov.