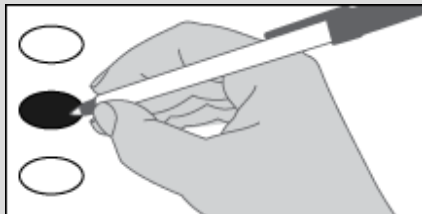


Sample Ballot
Special Election
February 14, 2023
Mason County, Washington

The Sample Ballot contains all contests for Mason County. Only the Sample Ballot contest that apply to the precinct where you are registered to vote will appear on your Official Ballot.

Instructions

How to vote

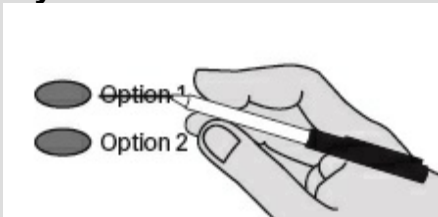


Use a dark ink pen to completely fill in the oval to the left of your choice.
Do not use a felt tip marker.

Vote for one in each race.

If you vote for more than one, no votes will be counted for that race.

If you make a mistake



Draw a line through the entire incorrect choice.
Then you may make another choice.

Mason County Auditor's Office Elections Department - Vote Center

411 N 5th St
Shelton, WA 98584
(360) 427-9670 ext. 470
elections@masoncountywa.gov

www.masoncountywaelections.gov

Open: Monday-Friday

9:00 am - 4:00 pm

Election Day: 9:00 am - 8:00 pm

**To update your address
contact our office or visit VoteWA.gov**

Who donates to campaigns?

View contributors for measures at:

Public Disclosure Commission

www.pdc.wa.gov

Toll free (877) 601-2828



Start Voting Here

School

Proposition No. 1 Elma School District No. 68 Bonds To Construct And Improve School Facilities

The Board of Directors of Elma School District No. 68 adopted Resolution No. 07-2223, concerning bonds to relieve overcrowding and improve educational and athletic opportunities. This proposition would authorize the District to: construct a new Grades 4-6 Upper Elementary School; construct a new outdoor athletic and activities complex for students and community; construct parking for new facilities; reconfigure existing student pickup/drop off areas; make District-wide critical capital repairs and improvements; issue no more than \$66,000,000 of general obligation bonds maturing within 25 years; and levy annual excess property taxes to repay the bonds, all as provided in Resolution No. 07-2223.

Should this proposition be:

- Approved
 Rejected

Shelton School District No. 309 Educational Programs and Operations Replacement Levy

The Board of Directors of Shelton School District No. 309 adopted Resolution No. 22-06, concerning a proposition to finance educational programs and operations expenses. This proposition would authorize the District to support educational programs and operations not funded by the State (including class size reduction, after school programs, teachers, extracurricular activities, special education, facility operations/maintenance, transportation and technology), by levying the following excess taxes, replacing an expiring levy, on all taxable property within the District:

Estimated Levy Rate/\$1,000

Collection Year	Assessed Value	Levy Amount
2024	\$2.09	\$7,100,000
2025	\$2.09	\$7,600,000
2026	\$2.09	\$8,200,000

all as provided in Resolution No. 22-06.

Should this proposition be approved?

- Levy...Yes
 Levy...No

**Pioneer School District No. 402
Educational Programs and Operations Replacement Levy**

The Board of Directors of Pioneer School District No. 402 adopted Resolution No. 4-2022, concerning a proposition to finance educational programs and operations expenses. This proposition would authorize the District to levy the following excess taxes, in place of an expiring levy, on all taxable property within the District, for support of the District's educational programs and operations expenses not funded by the State of Washington:

**Estimated Levy
Rate/\$1,000**

Collection Year	Assessed Value	Levy Amount
2024	\$1.34	\$2,802,110
2025	\$1.34	\$2,886,173
2026	\$1.34	\$2,972,758
2027	\$1.34	\$3,061,940

all as provided in Resolution No. 4-2022.

Should this proposition be approved?

- Levy...Yes**
 Levy...No

**Thank you for returning your ballot no later than:
Tuesday, February 14, 2023.**